

We market our products in Europe, the USA and many other countries around the world. Here we gain experience and gather knowledge from scientific studies, which we share with you in each issue of our "KRAIBURG Practical Experience." We want it to be a source of helpful tips for you. Send us your suggestions - we count on them to help us give you a better product!

Thank you very much from your KRAIBURG research & development

LAMINITIS – NOT EVERYTHING IS CAUSED BY METABOLISM

An examination by the Veterinary Medical Clinic of Leipzig University reveals: **The most important prophylactic factor in the prevention of laminitis is floor construction.**

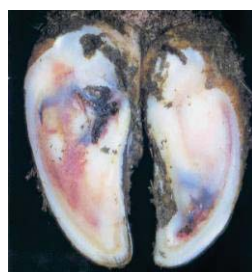
What is subclinical laminitis and why is this claw disease so important?

Subclinical laminitis is the **most frequent laminitis form in dairy cattle**. The animals affected show no lameness, but at claw trimming yellowish bloody inclusions appear within the horn. **Through the changes in the corium only horn of lower quality can be produced.**



Yellowish red spots in the sole area are typical symptoms of laminitis

Subclinical laminitis is regarded as **the primary cause of numerous other claw diseases like sole ulcers, white-line defects, claw tip ulcers, double sole formation and heel horn erosion.**



A bluish spot indicates subclinical laminitis.



The dorsal wall is bent, a typical symptom of laminitis.



A double sole, caused by laminitis.

Experimental arrangement:

- On three large farms 123 Holstein Friesian cows were systematically examined from drying off to finishing the second lactation month.
- Housing systems: Loose housing with cubicles
 - Walking areas:**
 - farm A (562 cows): mastic asphalt
 - farm B (530 cows): walking alleys littered with straw
 - farm C (623 cows): **rubber covered walking alley floors**
- Besides blood analysis for assessing the metabolism, all 8 main claws were checked twice in 8 week intervals after functional claw trimming. After the end of the examination a lameness assessment (locomotion scoring) was conducted.

The most important results:

- **Farm C with complete rubber floor covering had the fewest subclinical laminitis symptoms.**
- **An interrelationship between energy metabolism and subclinical laminitis could not be found in this study.**

CONCLUSION: Subclinical laminitis was found least often on rubber floors.

Source: Prof. Dr. Manfred Füll, Katrin Wilhelm, Jürgen Wilhelm of the Medical Veterinary Clinic of Leipzig University, Nutztierpraxis aktuell, January 2011

Images: Landwirtschaftsverlag GmbH, top agrar Fachbuch „Klauenprobleme schneller lösen“ [“Solve claw problems faster“], 2003